



## Het iconische mid-light uniseks T-shirt

Medium Fit                      XXS → 5XL\*                      155 GSM

### Description

Ingezette mouwen  
1x1-ribboord aan de kraag  
Nekband aan de binnenkant in dezelfde stof  
Dubbele sierstiksels aan mouwuiteinde en zoom

### Composition

Shell - Enkelvoudige jersey  
100% Gesponnen en gekamd biologisch katoen - 155.0 GSM  
Gewassen stof

### Care instruction

Kleuren met dezelfde tinten samen wassen, niet strijken op bedrukkingen, binnenstebuiten wassen en strijken.



### Land van herkomst

Weaving : Bangladesh  
Dyeing : Bangladesh  
Assembly : Bangladesh



Whites



White  
C001



Vintage  
White  
C504



Natural  
Raw  
C054

Colors



Nieuw

Lemon  
Sorbet  
C133



Nieuw

Blue Grey  
C156



Nieuw

Violet  
C134



Nieuw

Verdant  
Green  
C137



Nieuw

Deep Plum  
C151



Nieuw

Mocha  
C135



Pink Joy  
C360



Dusk  
C359



Black  
C002



Desert  
Dust  
C028



Fiesta  
C143



Anthracite  
C253



Bottle  
Green  
C224



India Ink  
Grey  
C715



Butter  
C078



Spectra  
Yellow  
C204



Teal  
Monstera  
C060



Stem  
Green  
C059



Go Green  
C100



Caribbean  
Blue  
C724



Khaki  
C223



Ocean  
Depth  
C710



Heritage  
Brown  
C730



Sage  
C047



Blue Ice  
C728



Sky blue  
C232



Bright Blue  
C053



Royal Blue  
C230




French  
Navy  
C727



Lavender  
C063



Red  
C004



Burgundy  
C244



Cotton Pink  
C005



Canyon  
Pink  
C038



Bright  
Orange  
C013

Essential Heathers



Dark  
Heather  
Grey  
C651



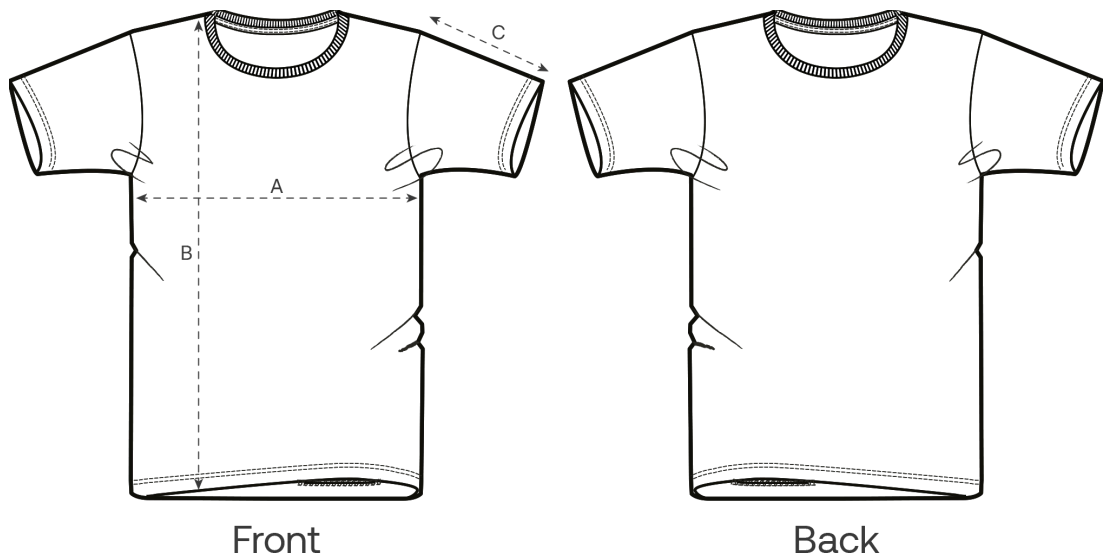
Heather  
Grey  
C250

Special Heathers



Eco  
Heather  
C147

Size Guide



| Measurement in cm | XXS  | XS   | S  | M    | L  | XL   | XXL | 3XL  | 4XL  | 5XL  |
|-------------------|------|------|----|------|----|------|-----|------|------|------|
| A - Half Chest    | 44   | 46   | 48 | 52   | 55 | 58   | 62  | 66   | 71   | 76   |
| B - Body Length   | 61   | 64   | 68 | 72   | 74 | 76   | 78  | 80   | 82   | 83   |
| C - Sleeve Length | 17.5 | 18.5 | 20 | 21.5 | 22 | 22.5 | 23  | 23.5 | 23.5 | 23.5 |

Packing

| Sizes        | XXS | XS  | S   | M   | L   | XL  | XXL | 3XL | 4XL | 5XL |
|--------------|-----|-----|-----|-----|-----|-----|-----|-----|-----|-----|
| Pieces / bag | 5   | 5   | 5   | 5   | 5   | 5   | 5   | 5   | 5   | 5   |
| Pieces / box | 50  | 100 | 100 | 100 | 100 | 100 | 100 | 50  | 50  | 50  |

Environmental impact

Houd er rekening mee dat de onderstaande tabel gegevens toont voor een volwassene in maat M.

| Koolstofuitstoot in Kg CO2eq      | Natural Raw | Eco-heather | Wit & Kleuren | Heathers* |
|-----------------------------------|-------------|-------------|---------------|-----------|
| From cradle to gate <sup>1</sup>  | 1.61        | 1.67        | 2.0           | 2.02      |
| From cradle to grave <sup>2</sup> | 3.76        | 3.81        | 4.14          | 4.16      |

| Waterverbruik in m³               | Natural Raw | Eco-heather | Wit & Kleuren | Heathers* |
|-----------------------------------|-------------|-------------|---------------|-----------|
| From cradle to gate <sup>1</sup>  | 0.57        | 0.7         | 0.94          | 1.01      |
| From cradle to grave <sup>2</sup> | 1.79        | 1.91        | 2.15          | 2.22      |

1 - Van de winning van grondstoffen tot het moment dat het product de fabriek verlaat. 2 - Van de winning van grondstoffen tot het einde van de levensduur van het product. \* Behalve Heather Haze.