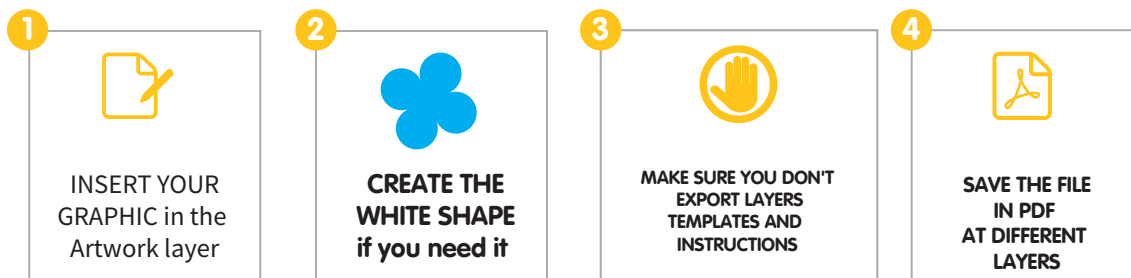
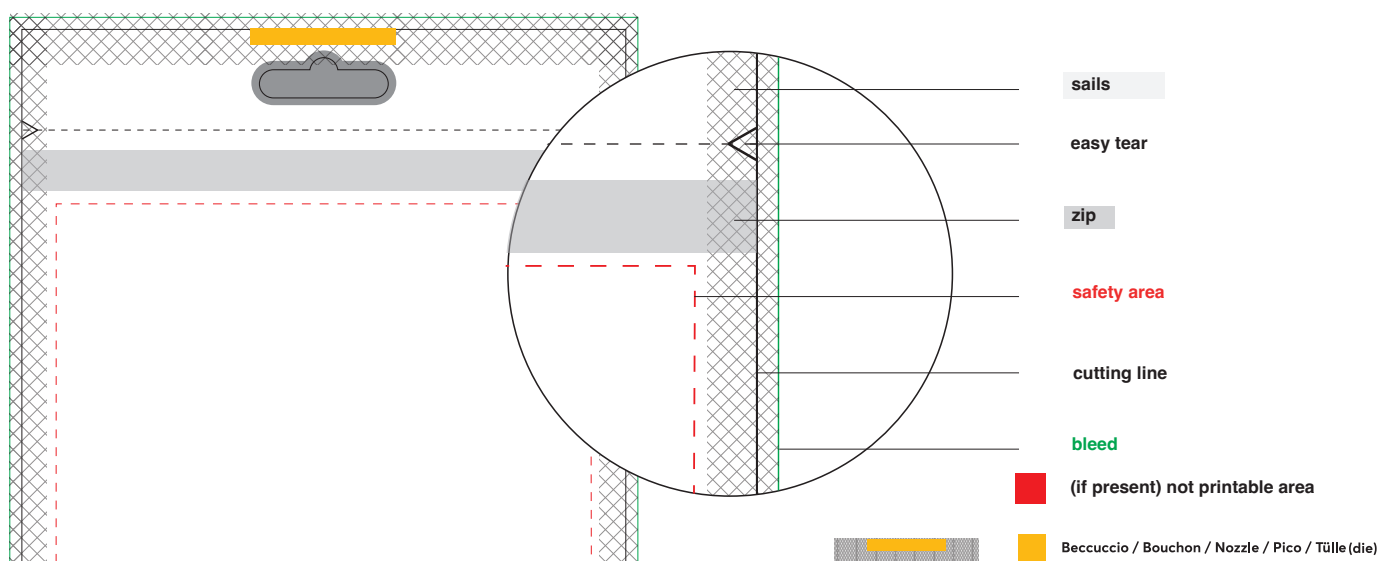


IT'S EASY TO CREATE AN ARTWORK:



LEGEND









Safety area

Define the area where we suggest to put the main text and graphic elements to avoid the risk they will be cutted out in production, while other elements, like the background, can reach the bleed.

Is it possible to place graphic elements, except transparent window, on the seals areas (we suggest you to keep any transparent window within the safe area). Kindly be informed that in the seals area, because of the heat sealing process, a colour variation may occur.

DOCUMENT SETTINGS

To get the best printing result we recommend to set the document following these options:

 create a file with texts and VECTOR logos	 color space CMYK	 resolution 300 dpi un-interpolated	 minimum font size 6pt	 minimum line thickness 0,25 pt	 max BLACK percentage C,M,Y,K: 40%,40%,40%,100%
---	--	--	---	--	--

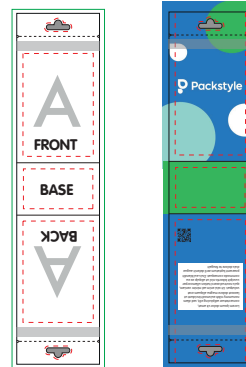
1 PLACE YOUR ARTWORK

Place your artwork on both sides of the pouch paying attention to the right orientation and to the template reference lines.

WARNING:

The artwork on the **BACK** of the pouch must be turned upside-down (180°) compared to the **FRONT**.
Some substrates doesn't allow you to customize the entire surface of the pouch.
These parts will be highlighted with a **RED** filled area.

WARNING: The printed colour may differ from what you see on the screen: this is normal and depends on several technical factors such as the calibration of your monitor, the colour gamut of the inks, the material being printed on, the finish applied.

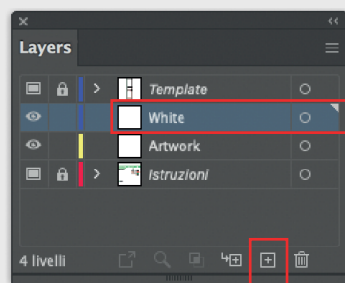


2 OPTIONAL TRANSPARENT WINDOW (AVAILABLE ON PLASTIC FILM ONLY)

With a transparent window you can show the product in the pouch.

1 LAYERS > NEW LAYER > White

From the layer palette create a new layer and set the name to "White".
Place the layer over the Artwork one.



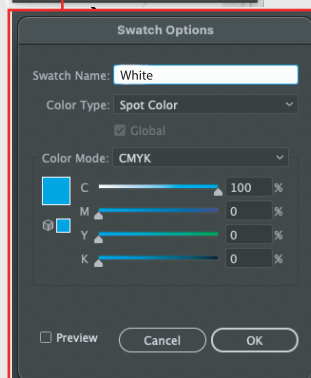
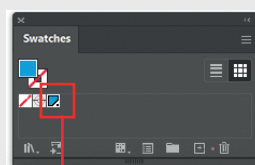
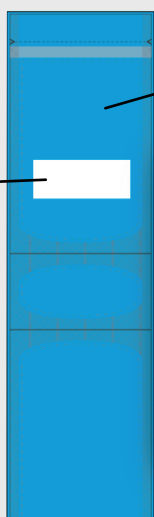
2) name it White

1) Create new layer

2 SWATCHES > White

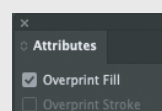
In the White layer create a **VECTOR SHAPE** (no raster images) of the area that **WON'T** be transparent and fill it with the White spot color you can find in the swatches panel.

If you want the window completely transparent, on layer Artwork create a normal white fill in correspondence of it (C=0%;M=0%;Y=0%;K=0%)



WARNING

All the vector shapes of the White layer must have the "OVERPRINT FILL" active (Windows/Attributes/Overprint Fill).

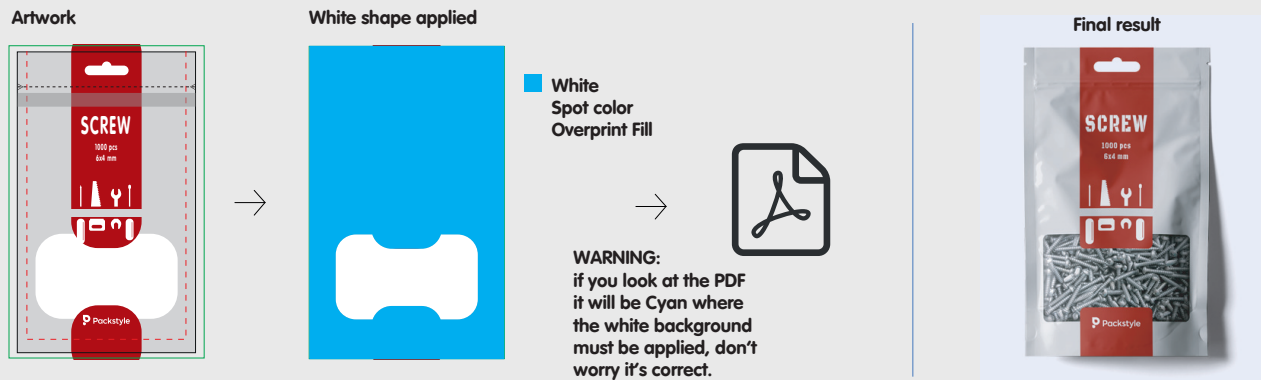


If you can't find the White spot color in your swatches library follow the instructions below:

SWATCHES > NEW SWATCH > White

In the Swatches panel create a new swatch, naming it White; select "spot color", color method CMYK and set the following color values: C=100%, M=0%, Y=0%, K=0%.

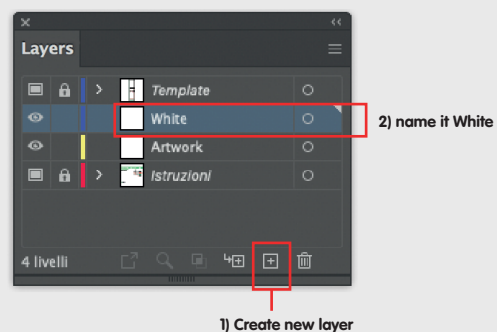
Sample



ALUMINIUM OR WHITE BACKGROUND

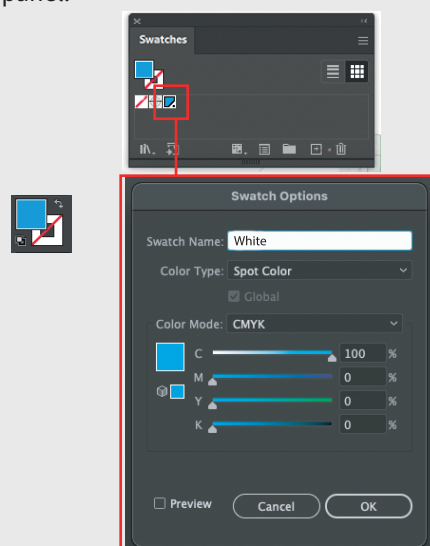
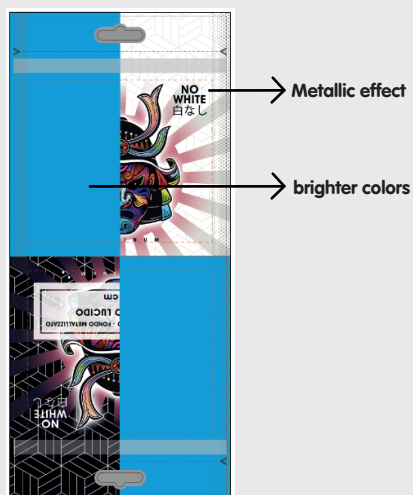
1 LAYERS > NEW LAYER > White

From the layer palette create a new layer and set the name to "White". Place the layer over the Artwork one.



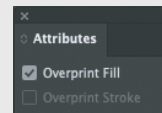
2 FILL AND STROKE > White

In the White layer create a VECTOR SHAPE (no raster images) of the area that will be with brighter colors and fill it with the White spot color* you can find in the swatches panel.



WARNING

All the vector shapes of the White layer must have the "OVERPRINT FILL" active (Windows/Attributes/Overprint Fill).



If you can't find the White spot color in your swatches library follow the instructions below:

SWATCHES > NEW SWATCH > White

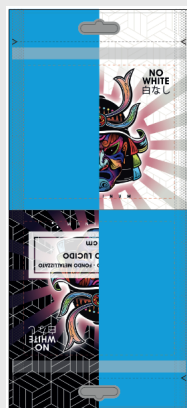
In the Swatches panel create a new swatch, naming it White; select "spot color", color method CMYK and set the following color values: C=100%, M=0%, Y=0%, K=0%.

Sample

Artwork



White shape applied



■ White
Spot color
Overprint Fill



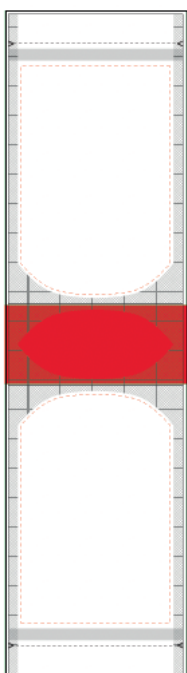
WARNING:
if you look at the PDF
it will be Cyan where
the white background
must be applied, don't
worry it's correct.

Final result

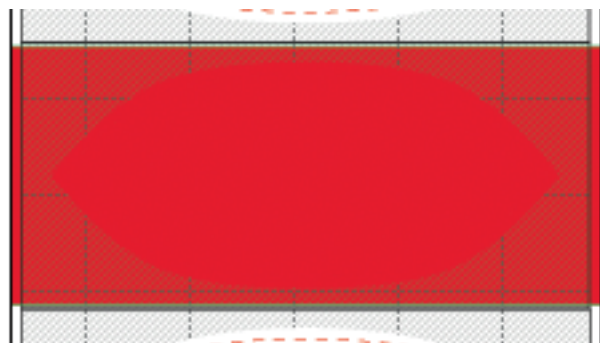


PAPER MATERIAL SPECIFICATIONS

When you create your file on paper or paper/aluminium material, remember to avoid customizing the bottom.



BOTTOM



IMPORTANT!

If the bottom has been customized, it will be automatically removed.

WARNING: Colour fading may occur on the welds.

ADDITIONAL INFORMATION

- 1** MAKE SURE YOU DO NOT UNLOCK, EDIT, EXPORT THE TEMPLATE LAYERS AND INSTRUCTIONS.
- 2** If you have doubts to create the White swatch watch this tutorial:
<https://blog.packstyle.com/en/packblog/how-to-create-a-packaging-with-a-transparent-window-graphic-tutorial>
- 3** Remember not to insert overprint fill on graphic elements that should not have it otherwise the file could be compromised.
- 4** Convert texts in path.
- 5** Kindly include the images in the pdf.
- 6** In order to prevent text and images from being cut off, it is strictly necessary to keep at least 10 mm margin from the cut line and the fold line of the pouch.
- 7** Remember to include the legally required disposal logos. You can request them by e-mail or download them from the website.
- 8** Avoid entering particular colors or pantones, do not insert the white color like a normal cyan, otherwise our software will read it like a sample.

SAVE THE FILE IN PDF WITH SEPARATE LAYERS AND AVOID EXPORTING PRINTING MARKS.